



SWEP

SCHOOLS WATER
EFFICIENCY PROGRAM



What is The Schools Water Efficiency Program?

SWEP enables schools to continuously track their water consumption by using data logger technology.

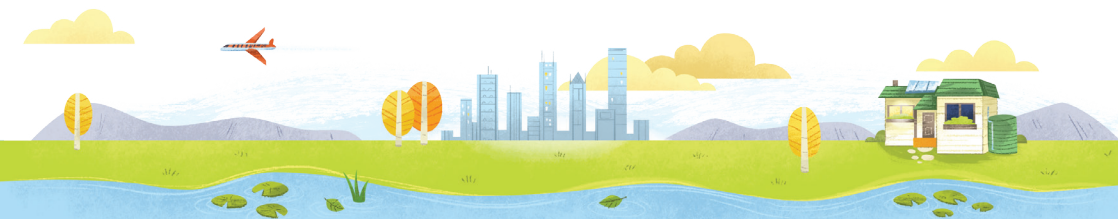
The program provides teachers and students an opportunity to learn about water efficiency through maths concepts such as measurement and data in a tangible and realistic environment.

Business and Facility managers can monitor their school's water usage to detect leaks and faulty appliances so they can be rectified, allowing schools to save water and money.



‘Being a SWEP school really is a “no brainer”. You will reduce your water and energy use, you will quickly find leaks in your system and you will save money that you can put into other programs. We have cut our water use by well over 90% and saved in excess of \$70,000 since 2006.’

Bill Thomas PSM, Churchill Fellow,
Head of Sustainable Practice Bentleigh SC



myswep.com.au

Why join SWEP?

As at 1 January 2016, 718 participating SWEP schools have saved more than 2 billion litres of water that would have otherwise cost them more than \$5.7 million in water and sewage related charges.

Schools save water and money by monitoring water use and acting on leaks and issues as they occur. **Every** participating school has identified leaks that may not have been identified as quickly.



By signing up to SWEP, your school will receive:

- Up to **two data loggers fitted for free**, additional loggers are at cost. There is no disruption to water use at any time;
- Access to a **dedicated website** for monitoring and managing water consumption data;
- **Unlimited** staff, student and administrative **access**;
- **Teacher assistance** and training can be provided where necessary;
- Access to **specially designed primary and secondary curriculum resources**. These resources address English, Math, Science and Sustainability issues;
- For some schools one of the data loggers can be **connected to a rainwater tank(s)**. The plumbing costs for metering the rainwater tank(s) will also be met by SWEP. Conditions apply.

SWEP is a voluntary program open to **every** Victorian school. The program requires a **three-year commitment** by schools and there are **no upfront costs** to the school; however the total program costs for participating is **\$300 (ex GST)** over the three years, payable by instalments of **\$150 (ex GST)** in each of the second and third years.

Visit www.myswep.com.au to learn more about the program, read case studies and see how the SWEP curriculum resource can be used at your school.

‘The SWEP resources are a great way to engage students in looking at and understanding water’

Alicia French – Manor Lakes Secondary College



How much schools have saved...

Being able to quickly detect water leaks and unusual water activity is critical for schools to make repairs and save water and money.

SWEP isn’t just about identifying broken pipes. More than 80% of the program’s savings have come from the early identification and repair of everyday fixtures and fittings such as sticking toilet cisterns and leaky evaporative air conditioners.

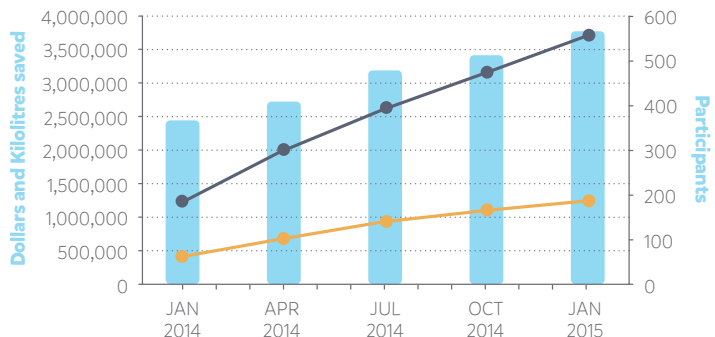
The schools below were able to use the SWEP system to identify problematic devices and repair them before they added substantial costs to their next water bill.



SCHOOL	ISSUE IDENTIFIED	VOLUME SAVED quarterly	MONEY SAVED quarterly
Lowanna College	Broken pipe	2,190kL	\$10,053
Wodonga Senior SC	Broken Pipe	2,626kL	\$6,210
Mill Park SC	Faulty Evaporative Cooler	1,068kL	\$4,440
Boroondara Park PS	Leaking toilet cistern	906kL	\$3,771
St Columba’s College	Leaking toilet cistern	402kL	\$1,602

Savings generated by schools participating in SWEP

- Participating schools
- Volume saved (kL)
- Money saved (\$)





SWEP monitors electricity...

The opportunity now exists for eligible schools to participate in an exciting pilot program which monitors your school's electricity use. The electricity pilot is also heavily subsidised but still requires a three year commitment at a cost of \$150 (ex GST) each year.

Register now

To register your school for SWEP or to find out more, visit www.myswep.com.au

Award winning

SWEP has won a number of awards including:



WINNER – Excellence in Sustainable Water Management

FINALIST

SWEP is delivered through the Department Environment, Land, Water and Planning and the Department of Education and Training.

SWEP is project managed by Yarra Valley Water on behalf of the Victorian Government.

Published by the Victorian Government Department of Environment, Land, Water and Planning Melbourne, January 2016

ISBN 978-0-9942737-0-3 (print)

ISBN 978-0-9942737-1-0 (online)

© The State of Victoria Department of Environment, Land, Water and Planning 2016

This publication is copyright. No part may be reproduced by any process except in accordance with the provisions of the Copyright Act 1968.