

## MAINTENANCE SHAFTS

### 1. PURPOSE

To outline East Gippsland Water's (EGW) standard requirements for maintenance shafts, where the requirements vary from or require further clarification to the Water Services Association of Australia (WSAA) Gravity Sewerage Code of Australia WSA 02-2014 Version 3.1 (WSA 02-2014); relevant clauses are shown in italics. The standard requirements outlined in this document shall be adopted for all maintenance shafts unless approved otherwise in writing by EGW.

### 2. APPROVAL

Executive Manager Infrastructure

### 3. REQUIREMENTS

Maintenance shafts shall meet the following requirements:

1. EGW may allow the installation of polypropylene maintenance shafts in addition to concrete manholes in accordance with WSA02-2014 (*clause 7.7.1 and 7.7.2*).
2. The use of polypropylene maintenance shafts in gravity sewers up to DN300 may be allowed, where specifically approved by EGW (*clause 4.13.2*).
3. All polypropylene maintenance shafts, where approved by EGW, must fully comply with AS/NZS 4999:2006 PVC-U Maintenance Shafts and WSA 137-2013 Industry Standard for Maintenance Shafts and Maintenance Chambers for Sewerage (*clause 4.1*).
4. There must not be more than one maintenance shaft between two maintenance holes (traditionally referred to as manholes) in order to allow insertion of camera and jet cleaning devices (*clause 7.3.2*).
5. The maximum depth of the shaft is to be 3 metres to allow good vision and access for inspections (*clause 7.7.2*).
6. If placed on a swept bend, shaft is to be located upstream of the bend (*clause 7.3.1*).
7. Cover type and finish level depend on maintenance shaft location as described in SEW-1317 in Appendix 2 (*clause 7.9.1*).

*Where alternatives to EGW's preferred engineering code and the suite of Technical Bulletins exist, these will be assessed and may be approved in writing by EGW on a case by case basis, with each variation documented. All codes and specifications will be consistently enforced across all works.*

#### 4. REFERENCES

- WSAA Gravity Sewerage Code of Australia WSA 02-2014 Version 3.1.
- WSAA Sewerage Code of Australia WSA02-2002 for drawings.
- WSA137-2013 Maintenance Shafts and Maintenance Chambers for Sewerage
- Appendix 1 & 2 of this technical bulletin

For further information contact the EGW Infrastructure Team.

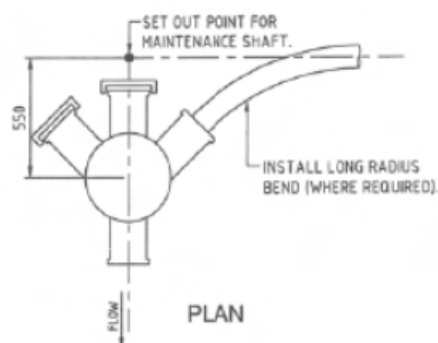
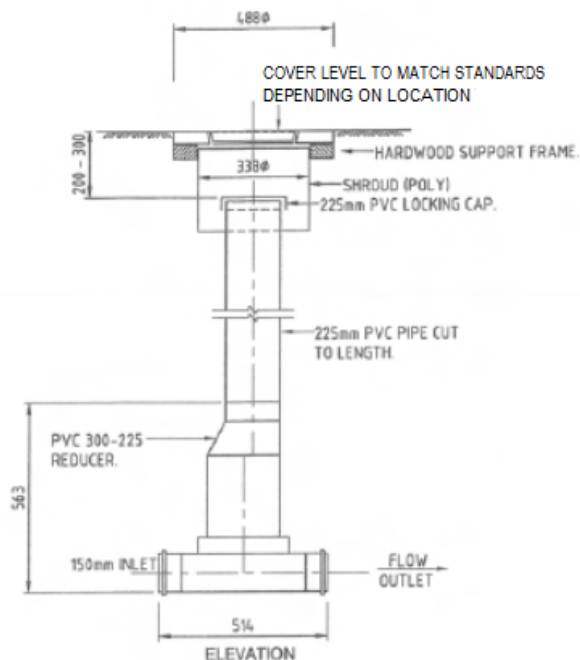
Ph: 1800 671 841

E-mail: [infrastructure@egwater.vic.gov.au](mailto:infrastructure@egwater.vic.gov.au)

#### 5. REVIEW

This Technical Bulletin will be reviewed two yearly unless otherwise required.

#### 6. APPENDIX 1: Maintenance Shaft and Connection Specifications



#### NOTES:

1. POLYPROPYLENE BASES (OR APPROVED EQUIVALENT) TO BE INSTALLED BY CONTRACTOR.
2. LONG RADIUS SWEEP BENDS TO BE INSTALLED FROM MAINTENANCE SHAFTS (WHERE REQUIRED) FOR CHANGE IN DIRECTION AT MS.
3. PUSH - IN PLUGS TO BE PLACED ON INLETS NOT REQUIRED.
4. LOCKING CAPS TO BE INSTALLED ON MS'S ON PRIVATE PROPERTY.
5. INSTALLATION TO BE IN ACCORDANCE WITH THE MANUFACTURER'S SPECIFICATIONS.

**MAINTENANCE SHAFT**  
NOT TO SCALE

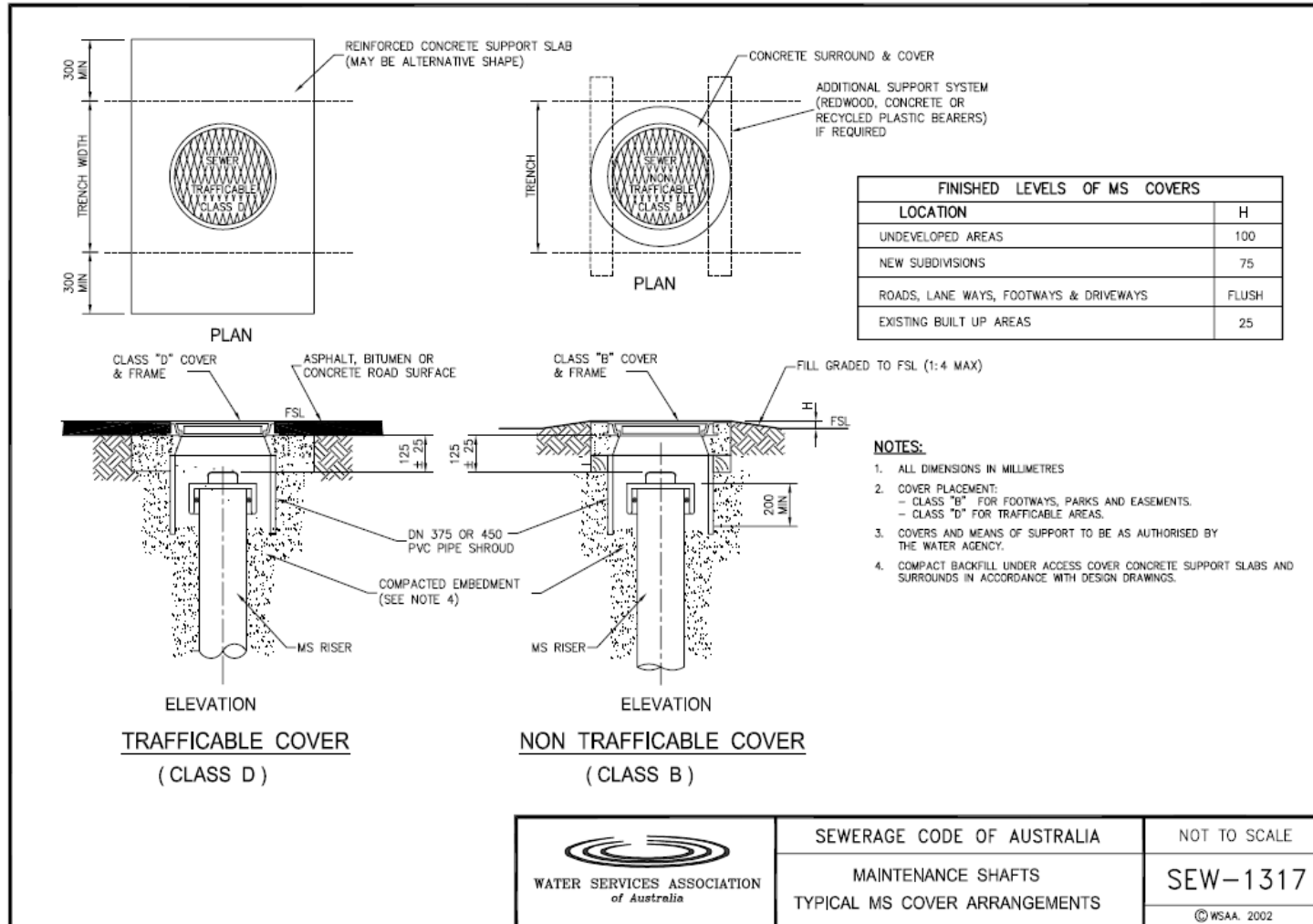


East Gippsland **Water**

**TECHNICAL BULLETIN TB 006**

**DATE REVISED: 31 -08-16**

**7. APPENDIX 2: Maintenance Shaft Cover Arrangement Specification**



ADDITIONAL INFORMATION PROVIDED IN SEW-1300 SERIES COMMENTARY

Source: SEW-1317, Standard Drawings, WSA 02-2002 Sewerage Code of Australia Second Edition Version 2.1

Issued: 31-08-2016

Page 3 of 3

Sponsor: Executive Manager Infrastructure

DOC/12/18108

UNCONTROLLED WHEN PRINTED