

FACT SHEET



The Brodribb River

Background

East Gippsland Water supplies drinking water to the townships of Orbost, Marlo and Newmerella using water sourced from the Rocky and Brodribb Rivers.

The Orbost Water Treatment Plant came in to operation in 1998 and was upgraded during 2001 to increase its capacity and water flow.

During 2011, two filters were installed at the treatment plant to further improve the water quality and increase the water treatment plant capacity, so population growth can be met in the future.



The Rocky River

Water collection

The main supply of water for Orbost, Marlo and Newmerella is from the Brodribb River, which is pumped along a pipeline in to a raw water basin. water is also collected from the Rocky River and fed in to the raw water basin via a gravity pipeline.

Water treatment

Water is transferred from the raw water basin to the water treatment plant, where it is treated to remove any dirt and other unwanted particles.

To treat the water a coagulant is added, which draws all of the dirt and other unwanted particles together. This is known as floc. The water then enters the second part of the treatment cell where the floc is encouraged to settle out along cylinder-shaped tubes. The clear water is able to continue and passes through a filter containing sand and anthrcite (filter coal).

The treated water is then disinfected with sodium hypochlorite and pumped to a one million litre clear water tank, before it is supplied to the townships of Orbost, Marlo and Newmerella. There is also a 53 million litre clear water basin, which holds excess treated water that is available for use as required.

Backwash recycling

There is also a backwash system. This blasts any sediment that has been captured in the filter and transports it to the washwater tank (sludge tank). From here, the sediment is then able to settle out. The water coming out of the tank is passed back into the raw water basin for reuse and the solids are sent to the Orbost Wastewater Treatment Plant where they are treated and reused.

Plant control

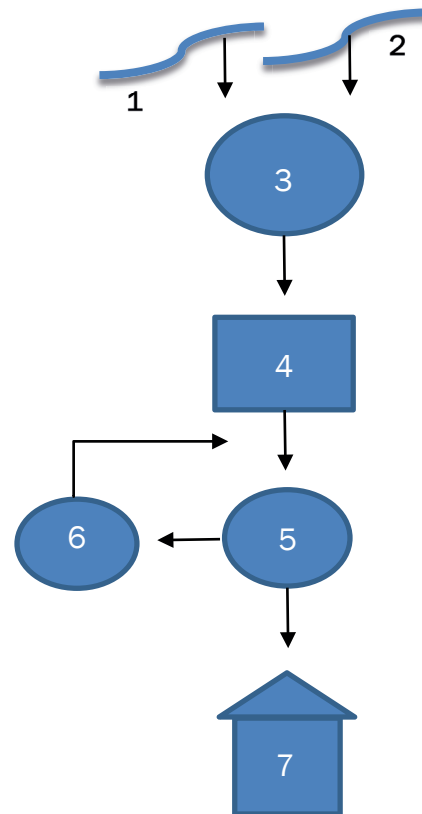
The treatment plant control system has a programmable logic controller (PLC) for automatic stop/start control of the plant. Automatic backwashing, desludging (removal of sediment), alarms and indicators are monitored on a SCADA system. This allows operators to remotely access and operate the water treatment plant.

A remote monitoring system operates around the clock and provides early warning of any faults or performance issues. The focus is on maximising operational efficiency, monitoring equipment reliability and compliance, and improving customer service.

For more information-

Contact East Gippsland Water on 1800 671 841 or email egw@egwater.vic.gov.au

Alternatively, Visit the Bairnsdale office at 133 Macleod street, Bairnsdale on weekdays during business hours.



Legend:

1. The Brodrribb River
2. The Rocky River
3. Orbost Raw Water Basin
4. Orbost Water Treatment Plant
5. Clear Water Tank
6. Clear Water Storage
7. Orbost, Marlo, Newmerella and surrounds