

FACT SHEET



Paynesville treatment lagoons

Background

A sanitary collection service was extended to Paynesville in 1933. During 1970, plans were initiated to provide Paynesville with a complete sewerage scheme. In 1974, acceptance of requests to include Eagle Point and Raymond Island meant plans for that scheme needed re-drawing.

The new plans showed sewerage treatment works sited on Raymond Island. However, opposition by residents together with issues raised by the Environment Protection Authority led to the selection of an alternative site between Peecks Road and Forge Creek Road, near Eagle Point. The plans were approved during 1977.

Tenders for the new sewerage scheme were called in August 1981. Four years later, stage 1 was completed with 450 houses connected.

Waste treatment

Sewage is collected from households and businesses in the surrounding areas of the paynesville treatment plant.

There the sewage is split and enters two Facultative Lagoons where solids settle to the floor of the lagoon and are digested by anaerobic bacteria.

The partially treated wastewater then flows by gravity from the Facultative Lagoons to an Oxidation lagoon, Before moving into the Winter Storage Lagoon. The Winter Storage Lagoon stores treated wastewater during winter months when irrigation is not possible.

Waste collection

The conventional gravity sewer system includes six major and three minor pumping stations at Paynesville, one major and two minor pumping stations at Raymond Island, three minor at Eagle Point and one minor pumping station at Newlands Arm Estate and Banksia Peninsula. There are currently about 2510 system connections.

Beneficial reuse

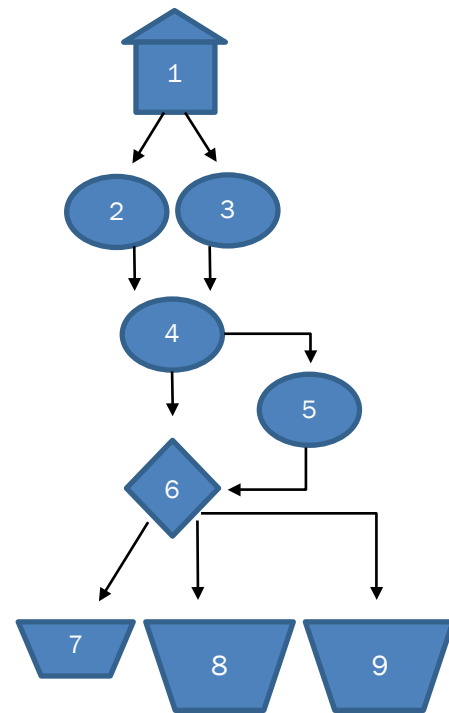
One hundred percent of the reclaimed water produced by the Paynesville Wastewater Treatment Plant is put to beneficial reuse.

Reclaimed water from the Paynesville Wastewater Treatment Plant is used to irrigate the golf course, pasture owned by East Gippsland Water, and privately owned pasture. After the minimum 20 days in storage, water from the winter storage lagoon is pumped directly to the above outlets.

For more information-

Contact East Gippsland Water on 1800 671 841 or by emailing egw@egwater.vic.gov.au

Alternatively visit the Bairnsdale office at 133 Macleod Street, Bairnsdale on weekdays during business hours.



Legend:

1. Wastewater from Paynesville and surrounds
2. Treatment lagoon 1
3. Treatment lagoon 2
4. Polishing lagoon
5. Winter storage lagoon
6. Pump station
7. Golf course irrigation
8. Irrigation to pasture on private owned property
9. Irrigation to pasture on EGW owned property