

Capital Works Update

Wy Yung basin liner replacement project

Works have commenced to replace the basin liner at our Wy Yung Water Storage facility. The 88ML Wy Yung basin is an important piece of infrastructure that supplies our customers in Bairnsdale and the surrounding areas with high-quality drinking water.

An issue with the polypropylene liner was detected that has compromised the liner's integrity resulting in the replacement being necessary. Over the past few months, we have been undertaking preparatory works to prepare the basin for the liner replacement works. This has involved testing the new 36ML concrete water storage tank that is being used as the main water supply system while the works occur and drawing down the water in the basin to our customers and diverting water into our Sarsfield storage tanks.

This \$6 million project involves the replacement and/or repair of any drainage pumps, floats, access hatches, underdrainage system, stabilisation of the clay liner and the installation of a new geomembrane liner and floating cover. Fabtech, a company specialising in the design and installation of geomembrane liners and covers is undertaking the works, which will take around six months to complete, weather dependent.



Wy Yung basin being drained.

Future projects

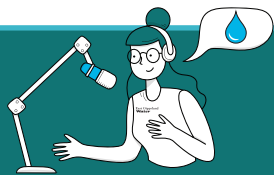
We have a number of important projects planned for the coming months. These include:

- Undertaking upgrade works to pipework that will supply the Bairnsdale City Oval with Class B recycled water for irrigation purposes, saving our precious drinking water
- Making improvements to the irrigation system at our Metung Farm
- Commencing desludging at our Paynesville Water Recycling Plant.

In addition to our capital works programs, there is always general operations and maintenance being undertaken by our fantastic staff across East Gippsland from Bairnsdale and surrounds through to Omeo, Orbost and Mallacoota districts.

Talking Water

Tune into our monthly podcast broadcasts on REG FM 90.7 & 105.5 FM, 3MGB 96.9 & 101.7 FM, 3HCR 90.9 & 97.3 FM as well as on our website.



New Year New Career 2024 success!

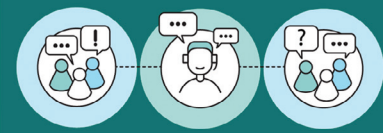
We are absolutely delighted that our New Year New Career 2024 'expressions of interest' campaign has been a great success.

Since the launch of the program we have received 25 applications from people with a variety of skills and experience and we have successfully recruited two people into our Sustainability and Infrastructure Team who bring a wealth of knowledge and experience in project design, construction and tendering. Ramsay and Gary will be a great asset to the organisation.

If you are interested in a new career in the water industry we would love to hear from you. Visit our website egwater.vic.gov.au for more information.

Customer Connect

Where: Orbost Office, 6 Clarke Street
When: Thursday, 21 March 2024
Time: 9am to 4pm



Drop in and chat to a Customer Support Team member face-to-face about your bill, flexible payment options, financial hardship or for any general enquiry you may have.

Water snapshot - Stream Flows

Stream flow information as at 14 March 2024	Current stream flow (million litres/day)	5 year average stream flow (million litres/day)	Rating of current flow	Current flow as a percentage of 5 year average
Bemm River	197.2	473.9	Low	42%
Betka River - Mallacoota	2.2	38.5	Very Low	6%
Brodrigg River - Orbost, Marlo, Newmerella	110.8	347.1	Low	18%
Buchan River - Buchan	59.8	329.5	Low	18%
Butchers Creek - Omeo	6.2	6.5	Average	95%
Cann River	77.0	250.5	Low	31%
Mitchell River	77.0	2109.0	Low	15%
Tambo River - Swifts Creek	40.6	207.1	Low	20%

* Mitchell River supply system = Bairnsdale, Walpa, Lindenow South, Lindenow, Eagle Point, Newlands Arm, Paynesville, Raymond Island, Sarsfield, Bruthen, Nicholson, Johnsonville, Swan Reach, Metung, Kalimna, Lakes Entrance, Lake Tyers Aboriginal Trust, Lake Tyers Beach, Nowa Nowa and surrounding areas.

Save Water and Save Money!

Did you know that if you are an East Gippsland Water customer or tenant of a customer, you can get money back from buying and installing a range of water efficient products?

Our Water Efficiency Rebate Program is running until 30 June 2028, and provides a number of incentives for you to save water, reduce your water consumption and ultimately save money on your water bill. A win, win!

Rebates available



How to apply

- Visit East Gippsland Water's website at egwater.vic.gov.au to complete an application form and email to egw@egwater.vic.gov.au
- Collect an application form at East Gippsland Water, 133 Macleod Street, Bairnsdale between 8.30am and 5pm Monday to Friday
- Call the Customer, Community and Communications team on 1800 671 841 if you would like any further information.

New Water Efficiency Rebate Program

Water conservation is just as important as building new projects to ensure we manage our water resources sustainably and reduce the load on our sewerage plants and recycling farms. This is why we are excited about our new Water Efficiency Rebate Program.

Over the next five years, we have \$90k per financial year available to provide rebates to customers, both residential and small businesses to achieve water savings. Customer rebates from \$10 up to \$1500 are available for a variety of items such as low flow showerheads, dual flush toilets, a basket of water saving products, water efficient washing machines and dishwashers, swimming pool covers, water tanks and toilet/laundry connections and water conservation audits.

It's easy to claim your rebate, just keep your receipts and complete an application form. Further details on the rebate program are available on our website egwater.vic.gov.au or call our customer support team during normal office hours on 1800 671841 to find out more.